

Moticam A Class

Accessorised | Affordable | Amazing



Moticam A Class

There are many categories of products that call themselves “the A-Class”. From cars to consumables and from trade to transport. What makes this new line of attachable digital microscope cameras the A-Class in Motic’s lineup of Moticam? The answer is in the letter. This camera has many features and characteristics that start with A. Let’s look at a few a bit closer:

Affordable

At Motic, we have been fortunate to rely on our cross-disciplined RnD as well as sourcing teams. This has allowed us to adopt many of our higher category features and components into this new package, enabling us to lower the MSRP to an even more affordable level.

Accessories

The Moticam A-Line follows our All-In-One-Box methodology. This means that with the included focusable lenses, eyepiece adapters and glass calibration slide, you can convert almost any conventional microscope into a digital microscope.

Adaptable

This line of cameras feature our state-of-the-art sCMOS imaging unit packed in a high quality metal housing. There is nothing “budget” about it, except perhaps the price. The on-board UVC technology means that you no longer have to search for and install a specific driver. This camera works equally well. Blazingly fast whether you are using USB2 or USB3 ports.



ALL IN ONE BOX



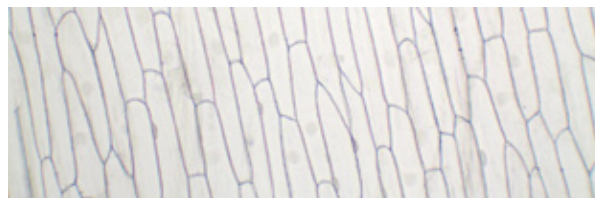
Pick A partner



Moticam A1

The Ideal Starter-Kit

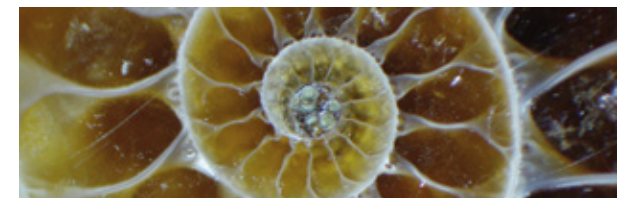
The Moticam A1 is priced to be the ideal starter kit for anyone wishing to turn their current microscope into a digital system. Attractively priced and still fully equipped with all necessary accessories, this sCMOS camera delivers the Moticam Ethos in an affordable package.



Moticam A2

Full-screen at Full Speed

If you are after Full HD resolution, the Moticam A2 delivers 1920x1080 pixels at up to 30 frames per second. The built-in 1/3" sCMOS sensor provides clear and crisp imaging for a variety of microscopy applications.

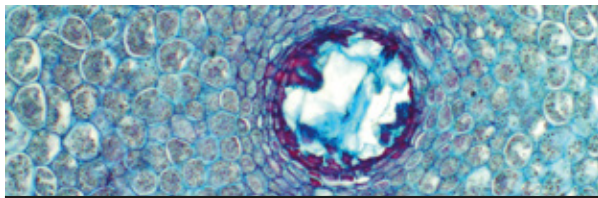




Moticam A5

The Ideal Balance

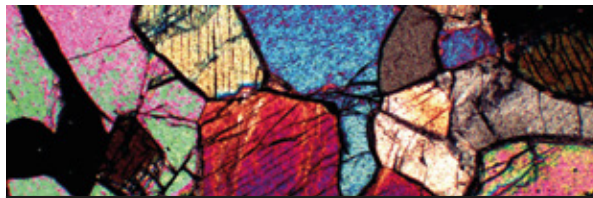
At full 5MP live resolution, the Moticam A5 delivers up to 30fps at 2592x1944 pixels per frame. Given its higher pixel count as well as sensitive sCMOS construction, the Moticam A5 performs well in many different contrasting techniques.



Moticam A8

Live - Print - Documentation

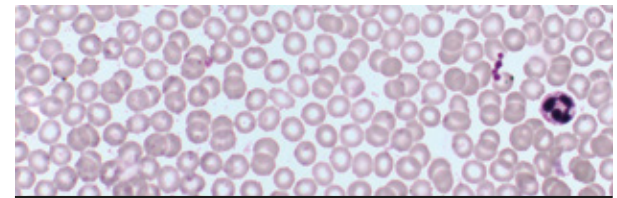
The Moticam A8 uses a fast sCMOS imaging setup to deliver 3840x2160 pixel images at up to 15fps. That's 4K imaging with 8MP resolution. With its higher resolution, the A8 is also ideal for documentation and flexible image capturing.



Moticam A16

High Resolution Wonder

With a 1/2" sCMOS sensor, the Moticam A16 not only captures 16MP images, but also provides up to 4608x3456 pixel live feed at up to 15fps making this the ultimate affordable package for live imaging, documentation or analysis.



MotiConnect

Easy - Flexible - Downloadable

The MotiConnect is a multi-platform toolbox to make the most out of your new Moticam A-Class product. Capture, Annotate, Measure and evaluate using simple to understand and easy to use tools. This free software can also be enhanced by purchasing the more advanced Motic Images Plus 3.1 from your nearest Motic Outlet.



Download MotiConnect:

<https://app.motic.com/ecn/moticonnect.html>





SKU	1100600101412	1100600101292	1100600101302	1100600101443	1100600101463
Name	Moticam A1	Moticam A2	Moticam A5	Moticam A8	Moticam A16
Sensor type	sCMOS				
Sensor size	1/3.1"	1/3.1"	1/2.8"	1/3"	1/2.3"
Imaging area	5.95mm (Diagonal)	5.95mm (Diagonal)	6.52mm (Diagonal)	5.91mm (Diagonal)	7.77mm (Diagonal)
Capture resolution	1MP	2MP	5MP	8MP	16MP
Live display mode through USB	1280x720, 1024x768 pixels	1920x1080, 1280x720 pixels	2592x1944, 2048x1536, 1920x1080 pixels	3840x2160, 1920x1080 pixels	4608x3456, 3264x2448, 1920x1080 pixels
Pixel size	4.1x4.1µm	2.7x2.7µm	2x2µm	1.34x1.34µm	1.34x1.34µm
Scan mode	Progressive				
Shutter Mode	Rolling Shutter				
Data transfer	USB 2.0				
Max. frames per second (fps)	1280x720 @ 30 fps, 1024x768 @ 30 fps (*)	1920x1080 @ 30 fps, 1280x720 @ 30 fps (*)	2592x1944 @ 30fps, 2048x1536 @ 30fps, 1920x1080 @ 30fps (*)	3840x2160 @ 15fps, 1920x1080 @ 30fps (*)	4608x3456 @ 15fps, 3264x2448 @ 15fps, 1920x1080 @ 30fps (*)
Operating temperature	From -10 to +60 Degrees Celsius non condensing				
Sensitivity	>2000mV				
Support device	TWAIN, SDK and Direct Show Driver				
Supported OS	Microsoft Windows 10, MAC OSX10.9, Linux UBUNTU1604 or higher				
Minimum computer requirements	2GHz dualcore - RAM memory 2GB				
Lens mount	C-Mount				
Focusable lens	12mm				
Software	MotiConnect for Windows/OSX/Linux (Download only)				
Functions	Still image and video capture, live and still image measurement, image adjustments, white balance, automatic & manual exposure, individual objective calibration system.				
Power supply	5V (USB supply)				
Package includes	CS ring adaptor, focusable lens, 30mm and 38mm eyepiece adapters, USB 2.0 cable, Motic 4-dot calibration slide, macro tube, Calibration card				

(*) Frames per second under optimal lighting conditions and in compliance with computer technical requirements.