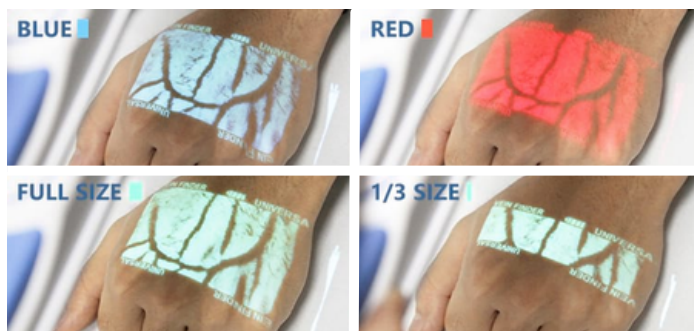


# VS 400™

## Infrared Vein Viewer

The VS 400™ Vein Viewer projects near-infrared light with no radiation. The near-infrared light is absorbed by the blood but reflected by the surrounding tissue to present a clear image of a patient's vein pattern.



### Color & Size Tuning

The VS 400™ has 5 color & 3 size projection settings to best fit the patient and environment.

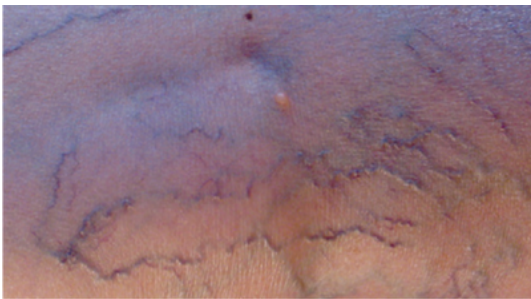
# Infinium VS 400™ Vein Viewer

## CLINICAL APPLICATIONS



### Venipuncture

Assists in finding a suitable vein for venipuncture efficiently & accurately.



### Vascular Procedures

Identifies deeper veins and assists in the treatment of spider veins.



### Cosmetic Procedures

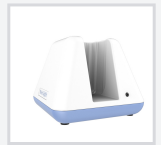
Locates and avoids veins during procedures to minimize bruising and possible migration of the injected fluids.

## FEATURES

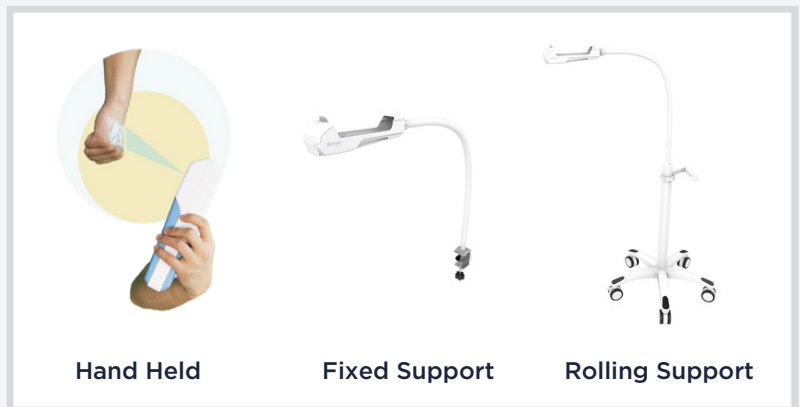
- High resolution imaging
- 5 color modes for different skin tones
- 3 projection sizes
- Long life rechargeable battery
- Fixed and mobile support arms available

### Charging Dock Standard

The Infinium VS 400™ comes standard with a convenient charging dock.



## USAGE OPTIONS & SUPPORTS



## SPECIFICATIONS

**LIGHT TYPE**  
Near-infrared light

**WAVELENGTHS**  
850 nm

**IMAGE RESOLUTION**  
720\*480 VISIBLE

**VEIN SIZE**  
≥1mm

**ACCURACY**  
0.25mm

**VISIBLE VEIN DEPTH**  
≤12mm

**BEST PROJECTION DISTANCE**  
18 to 22 cm

**IMAGE FRAME RATE**  
20FPS

**LED LIFETIME**  
20000 hours

**POWER SUPPLY**  
DC 5V ≤3.5W

**WEIGHT**  
450g

**DIMENSION**  
240x60x60mm (LxWxH)

**BATTERY VOLUME**  
4400mAh BATTERY

**WORKING TIME**  
5 hours

**CHARGING TIME**  
3 hours

**DETACHABLE**