

Moticam BTI10

TABLET SOLUTIONS

The Moticam BTI10 combines a space-saving camera hardware with new Wi-Fi technology. The 4MP Wi-Fi camera comes together with an 10" Android tablet to deliver fast live images (up to 30 fps) on any microscope with a vertical photo tube. This setup is perfect for the immediate presentation of image results to a greater public in your lab. Detaching the tablet for an even more flexible application is possible thanks to the Wi-Fi data transfer. Use the pre-installed MotiConnect App and get ready to capture, edit and share your microscope images from the tablet in a few taps.

www.moticamseries.com | www.moticmicroscopes.com

WI-FI MICROSCOPY SOLUTION WITH 10" TABLET





Moticam **BT10** TECHNICAL SPECIFICATIONS

Camera Specifications

Sensor Type	CMOS
Sensor Size	1/3"
Live resolution	1920 x 1080, 1280 x 720 (display resolution)
Image capture resolution	4.0 MP
Video capture resolution	720P (HD)
Data transfer	Wi-Fi (2.4 or 5 GHz) and Ethernet (RJ45)
Pixel Size	2.0µm x 2.0µm
Lens Mount	C-Mount
Tablet bracket holder	For tablets from 7" to 10"

Tablet Specifications

Size	218 x 136 x 910 mm
System	Android 10
Pre-installed App	MotiConnect
Language	Multi-Language
CPU	2.0GHz 8-core
RAM	6GB DDR3
NAND FLASH	128GB
Display	1920 x 1200
Ports	MicroSD/MMC/TF Card (Support up 64 GB), 3.5mm Audio, USB-C (USB OTG and Charging)
Camera	Front (5M Pixels) + Rear (8M Pixels)
Support Display Format	MPEG-1/2 (DAT, MPG, VOB, TS), MPEG-4, H.263 (3GP, MOV, MP4), H.264 (AVI, MKV, MP4, MOV, 3GP), RM, RMVB, FLV, WEBM
Support Audio Format	MP3, WMA, MP2, OGG, AAC, M4A, OGA, FLAC, APE, MP1, WAV
Picture Format	JPEG, GIF, BMP, PNG
Package Includes	USB Cable, Motic 4-dot calibration slide, universal power supply 100V-240V (CE)

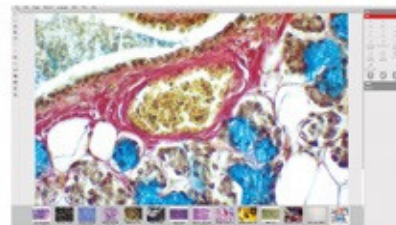
MOTIC IMAGES PLUS 3.0 SOFTWARE & MOTICONNECT APP

THE [AllinOneBOX] CONCEPT

Everything that you may need to work with your Moticam is included in one box

Motic Images Plus 3.0

By connecting your Moticam to your computer you will be able to work with our well-known software, that comes included in the package. View, capture, edit, measure, make reports... all its standard features and the new ones packed in a new user-friendly interface.



MotiConnect App

View, edit, capture and store your images in the blink of an eye, view live images on multiple wireless devices and share your work with anyone in just a few clicks. The MotiConnect App makes data sharing possible in a collaborative environment, encouraging teamwork and collective learning experiences.

